

# The world leader in sovereign intelligence from space

ICEYE (/ai'sai/) delivers unparalleled persistent monitoring capabilities to detect and respond to changes in any location on Earth, faster and more accurately than ever before.

ICEYE owns the world's largest and most advanced SAR (synthetic aperture radar) satellite constellation. To our customers we provide intelligence with unmatched quality, latency and revisit times, in any weather, day or night. To governments who choose to operate their own constellation we provide this proven capability as a sovereign system. ICEYE-built constellations serve customers in defence and intelligence, environmental monitoring, insurance and emergency management. We enable fast decisions that contribute to a safer future.



**70** Number of satellites deployed

**200** kg (~440 pounds) Weight

**2018** First satellite launched

**1,000+** Total employees globally

**\$600M+** Total funds raised to date

**Company HQ:** Helsinki, Finland. Offices in Finland, Poland, Spain, the UK, Australia, Japan, UAE, Greece, and the US.

**Patented technology:** 5 granted patents, related to our satellite technology and software, as well as solutions and applications

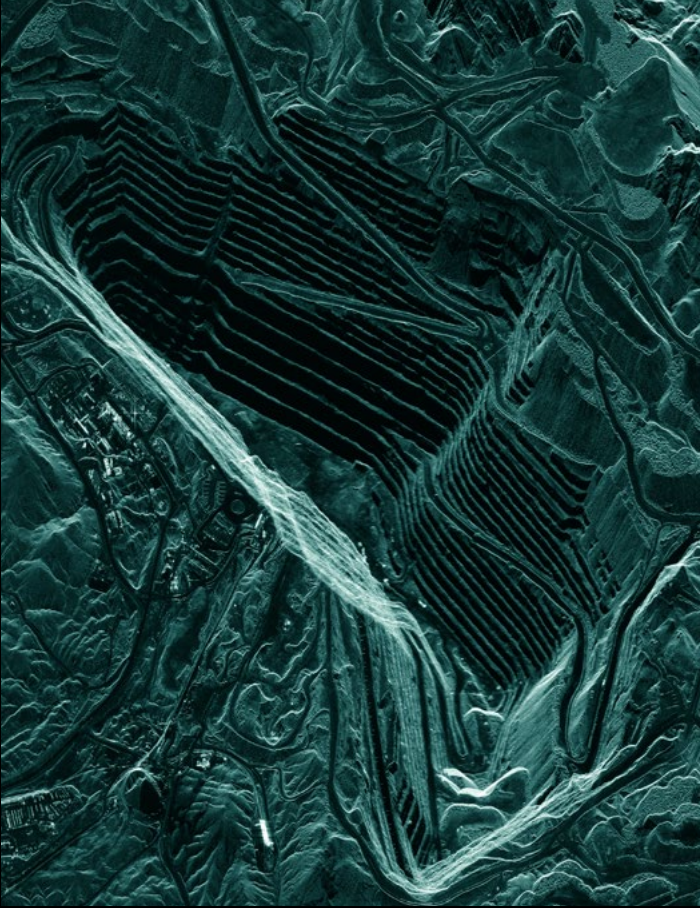
**Orbit:** Polar orbit, mid-inclination orbit

**Altitude:** 560-580 km (348-360 miles)

**Speed:** 16,780 mph or 7,5 km per second

**~90 minutes:** Time to complete one revolution of the Earth over the North Pole and under the South Pole

## Accurate, near real-time Earth monitoring with SAR data



Only SAR (Synthetic Aperture Radar) satellites can collect images day and night and in any weather. Only ICEYE's constellation of small and agile SAR satellites can revisit the same location in space daily and even sub-daily, enabling a level of change detection that's never been possible before.

### Defense and intelligence use cases

- Border monitoring
- Site activity monitoring
- Port monitoring
- Maritime domain awareness

### Industry use cases

- Sea ice monitoring
- Oil spill detection
- Deforestation detection

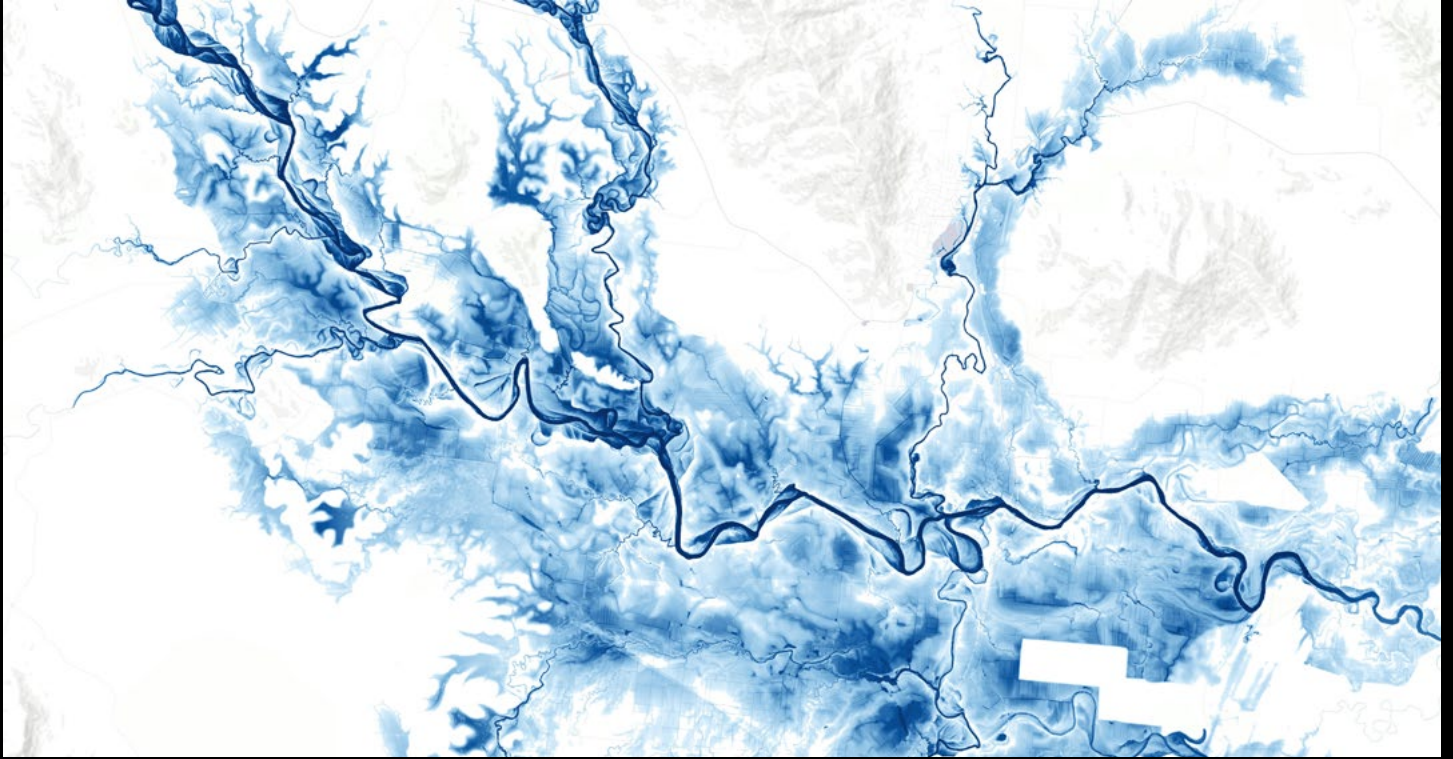
## The world's only proven high-performance NewSpace SAR satellites



ICEYE SAR satellites are purpose-built to be smaller, more affordable, and more flexible than legacy systems. Governments and organizations can build their own fleets of satellites that are highly agile, enable near real-time data delivery, and can be launch-ready very quickly.

As the only organization in the world able to deliver this groundbreaking capability, ICEYE also offers full launch services, training, and support, plus access to additional data from ICEYE's own constellation.

# Rapid assessment of NatCat exposures for insurers and governments



ICEYE's Flood and Wildfire Insights products combine SAR imagery, with multiple sources of ground data, and machine learning-powered analytics to produce actionable intelligence for governments and insurers.

## ICEYE Solutions

- Flood Insights: overall extent of a flood event (km<sup>2</sup>) and flood inundation levels at the property level (cm<sup>2</sup>).
- Wildfire Insights: overall footprint of a wildfire event, direction of travel, and number of buildings impacted by the event.
- Data is provided within 24 hours of the initial analysis being conducted on the event and at regular intervals as the incident develops.

## Government use cases

- Assess disaster impacts as an event unfolds
- Improve situational awareness
- Optimize emergency response
- Strengthen community resilience

## Insurance use cases

- Assess NatCat exposure within hours of an event's peak
- Deploy field resources faster and improve overall situational awareness
- Speed up insurance claims processing times
- Improve loss sizing and reserving
- Transform the policyholder experience

## Customer highlights

We work with commercial and governmental customers worldwide.

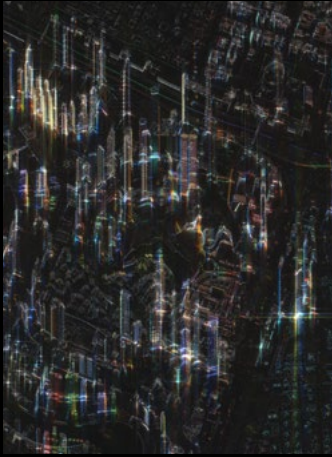


# What are the benefits of SAR?

ICEYE's SAR technology uses radar pulses to illuminate what's happening on the ground by piercing through any environmental condition, day or night. This advanced capability enables ICEYE to track millimeter-level changes on the Earth's surface, even those not visible to the human eye. As SAR satellites can provide imagery much more frequently than traditional Earth-imaging systems, our customers benefit from persistent coverage of fast-breaking events on the ground.

## UNPARALLELED SATELLITE IMAGING

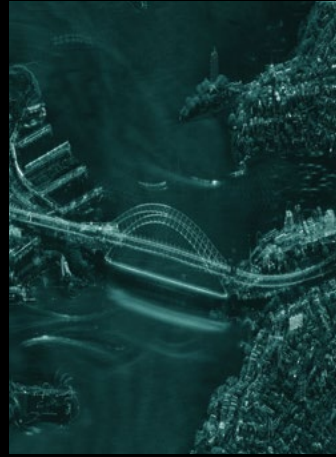
**Dwell, Dwell Fine & Dwell Precise for detailed views**



Extract unmatched critical information from a single image. See every detail in incredible clarity with enhanced image quality, superior information congestion, and reduced noise.

- 5x5 km
- 1 - 0.25 m resolution
- 25 sec collection time

**Spot, Spot Extended Area, and Spot Fine for detailed views**



Gain extensive insights with high-resolution satellite imagery from a smaller area delivered up to multiple times per day.

- 15x15 km
- 1 - 0.5 m resolution

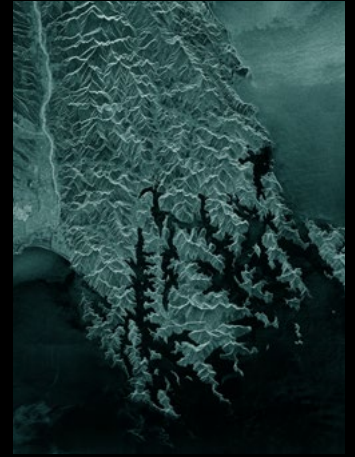
**Strip for medium-area coverage**



Timely response to changes on the ground including natural disasters and activities requiring fast intervention, as well as border and coastal surveillance.

- 30x50 km
- 3 m resolution

**Scan for wide-area coverage**



Reliable and timely information about extensive land and sea areas from a single SAR satellite image. Ideal for maritime safety.

- 840 x 100 km
- 15 m resolution

Explore ICEYE's press releases and download assets for media use → [iceye.com/newsroom](https://iceye.com/newsroom)

ICEYE global headquarters  
Helsinki, Finland

CEO/Co-Founder: Rafal Modrzewski  
CSO/Co-Founder: Pekka Laurila

ICEYE US headquarters  
Irvine, California

CEO, US: Eric Jensen

### Quick contacts

[ICEYE.com](https://iceye.com)

[ICEYE.com/contact](https://iceye.com/contact)

[LinkedIn: ICEYE](#)